

Monday 5th January 2026



Where children come first

Early Years Spring Newsletter

Dear EYFS families,

Welcome back and Happy New Year! We hope you all had a wonderful Christmas break. We are very excited to see all of the children and get started on the Spring Term. We also send a big and warm welcome to our new nursery families who have joined us this term.

Spring 1

Over the coming weeks, our learning will be centred around the exciting topics of **Dinosaurs** and **Mythical Creatures**, guided by the big questions: “*How many dinosaurs can you name?*”, “*Can you name any mythical creatures?*”, and “*Can you create your own mythical creature?*”

The children will take part in a range of creative and hands-on activities, investigating different types of dinosaurs, exploring fossils and using their imaginations to design and describe their very own mythical creatures. Through stories, role-play, small-world play, art, and early writing opportunities, they will develop their language, creativity, and problem-solving skills while having lots of fun.

Spring 2

After half term, our topics will be **Space** and **Superheroes**, guided by the big questions: “*Can you name the planets?*”, “*How can you travel to space?*”, “*What is your superpower?*”

We will be learning about the solar system, how astronauts travel to space, and explore the similarities and differences between Earth and outer space. The children will take part in activities that help them understand planets, rockets, gravity, and life as an astronaut. We will also be learning about both fictional and real-life superheroes, from storybook characters to the people in our community who help others every day, while thinking about kindness, bravery, teamwork, and the good deeds we can do to make us superheroes too.

Please note that to protect our children the school gates are locked between the hours of 8.30am and 9.05am and 2.45pm and 3.30pm. If you are travelling to school by car during these times, please be aware that you could be locked in the school car park. Please find alternative parking outside the school gates, if required.



Class texts

This term, we will be reading the following texts to support our learning:



Supporting your child at home

At Westfield, we don't set formal homework, but we do encourage families to support learning at home. We believe it's important for children to develop positive home learning habits early on and it also gives you a chance to see how they're progressing.

Regular Reading

Reading is the cornerstone of the children's learning, and we have already seen some incredible progress! You can support your child by reading regular bedtime stories with them and by reading the allocated books on **eCollins** to help build their confidence, vocabulary, and love of reading.

Communication Books

All Reception children will continue to bring home their **Communication Books** each week, which include support for the weekly phonics learning and our language development tasks. Nursery children's phonics learning will be shared through **Marvellous Me**.

Key events

Further information will be sent out in due course, but here is an overview of what is to come:

- World Book Day - **Thursday 5th March**
- EYFS and KS1 Parents' Evenings - **Monday 16th March** and **Wednesday 18th November**
- Early Years Easter Fundraiser - **TBC**

P.E. Days

Please see the chart below for your child's PE days:

Class	Day
FLM	Monday
FEI	Tuesday
FKH	Friday



Where children come first

Headteacher : Lamara Taylor

Email: office@westfieldprimary.co.uk
Website: www.westfieldprimary.co.uk

Assemblies

In Early Years, we hold weekly assemblies, including a Virtue Assembly on Mondays and Celebration Assemblies on Fridays. If your child would like to share a certificate or achievement with their peers, please send it in on a Friday so we can celebrate their successes during the Celebration Assembly.



How can I keep up to date with everything?

Please keep an eye on **Marvellous Me** notifications, where we'll continue to celebrate your child's successes and share any important updates.

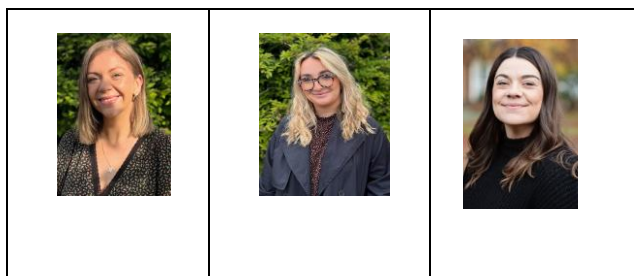
Please ensure you keep us informed of any changes to contact details through the Arbor App. All emails and text messages from the School Office will be sent using this information.

Please don't hesitate to approach us with any questions. We are always happy to have a quick chat before or after school, but we kindly ask that you wait until all children have been safely handed over before approaching.

Thank you for your continued support.

Kind regards,

Mrs Briant, Early Years Phase Leader and The Early Years Team



Please note that to protect our children the school gates are locked between the hours of 8.30am and 9.05am and 2.45pm and 3.30pm. If you are travelling to school by car during these times, please be aware that you could be locked in the school car park. Please find alternative parking outside the school gates, if required.



Mrs Briant	Miss Hill	Miss Martin
------------	-----------	-------------